

Yale®

Electric chain hoist model CPM



Optional

- The models CPM 2-8, 5-8 and 10-8 are alternatively available in 230 V, 50 Hz, single phase.
- Other operating voltages on request
- Motor with stainless steel brake
- Stainless steel load chain
- Festooned cable systems (see page 56)



Limit switches



Counter for operating hours and starts

Electric chain hoist model CPM with suspension hook

capacities 125 kg - 2.000 kg

Electric chain hoist model CPM with integral trolley

capacities 125 kg - 2.000 kg

The model CPM is a robust, reliable and easy to service unit with a long service life. The whole range is fitted with many standard features that were usually only available as extras.

The integral limit switches for the **highest and lowest hook** positions considerably extend the working life span of the slip clutch, motor and gearbox.

Features

- **Classification 1 Am.** As required the model CPM (with appropriate changes to lifting capacity resp. duty cycle) can also be graded up to the classification 3m. All known domestic and European regulations of the classification according to FEM, ISO or BS are complied with resp. exceeded.
- **Counters for operating hours and number of starts** for advanced operation monitoring.
- Main contactor as standard, for increased safety.
- **2 year warranty** (excluding wear parts).
- **Thermal overload protection** as standard for the whole range.
- Duty cycle **50 % ED** for single speed.
- Electromagnetic, spring pressure brake holds the load safely even in the event of power failure.
- **Chain container standard.**
- Motors according to VDE 0530 protected to **IP55**, against ingress of dust and water.
- Standard operating voltage: Euro-voltage 400 V, 50 Hz, 3-phase.
- Increased operating safety through **48 V control voltage** (contactor control) and an encapsulated pendant control to IP 65.

Technical data

Model	Capacity in kg/ chain falls	Chain dimensions d x t in mm	Lifting speed		Hoist motor kW	Motor rating ED %	Hook suspension kg	Net weight*		Standard chain container for_m chain
			Main lift m/min	Fine lift m/min				Push** trolley kg	Electric*** trolley kg	
CPM 1-8	125/1	5 x 15	8	–	0,4	50	21	32	41	8
CPMF 1-8	125/1	5 x 15	8	2	0,4/0,1	33/16	24	35	44	8
CPM 1-12	160/1	5 x 15	12	–	0,4	50	21	32	41	8
CPMF 1-12	160/1	5 x 15	12	3	0,4/0,1	33/16	24	35	44	8
CPM 2-8	250/1	5 x 15	8	–	0,4	50	21	32	41	8
CPMF 2-8	250/1	5 x 15	8	2	0,4/0,1	33/16	24	35	44	8
CPM 3-6	320/2	5 x 15	6	–	0,4	50	23	34	43	8
CPMF 3-6	320/2	5 x 15	6	1,5	0,4/0,1	33/16	26	37	46	8
CPM 3-12	320/1	6 x 18	12	–	0,8	50	33	44	53	9
CPMF 3-12	320/1	6 x 18	12	3	0,8/0,2	33/16	41	52	61	9
CPM 5-4	500/2	5 x 15	4	–	0,4	50	23	34	43	8
CPMF 5-4	500/2	5 x 15	4	1	0,4/0,1	33/16	26	37	46	8
CPM 5-8	500/1	6 x 18	8	–	0,8	50	33	44	53	9
CPMF 5-8	500/1	6 x 18	8	2	0,8/0,2	33/16	41	52	61	9
CPM 6-6	630/2	6 x 18	6	–	0,8	50	36	47	56	9
CPMF 6-6	630/2	6 x 18	6	1,5	0,8/0,2	33/16	44	55	64	9
CPM 6-12	630/1	8 x 24	12	–	1,6	50	51	63	78	8
CPMF 6-12	630/1	8 x 24	12	3	1,6/0,4	33/16	62	80	89	8
CPM 10-4	1000/2	6 x 18	4	–	0,8	50	36	47	56	9
CPMF 10-4	1000/2	6 x 18	4	1	0,8/0,2	33/16	44	55	64	9
CPM 10-8	1000/1	8 x 24	8	–	1,6	50	51	63	78	8
CPMF 10-8	1000/1	8 x 24	8	2	1,6/0,4	33/16	62	80	89	8
CPM 12-6	1250/2	8 x 24	6	–	1,6	50	58	76	85	8
CPMF 12-6	1250/2	8 x 24	6	1,5	1,6/0,4	33/16	69	87	96	8
CPM 20-4	2000/2	8 x 24	4	–	1,6	50	58	76	85	8
CPMF 20-4	2000/2	8 x 24	4	1	1,6/0,4	33/16	69	87	96	8

*Weight for standard 3m lift. Other lifting heights available.

**For trolleys type A and B: Additional weight for geared trolley (VTG): 2,5 kg

***For electric trolley (VTE) with 2 speeds 2,0 kg.

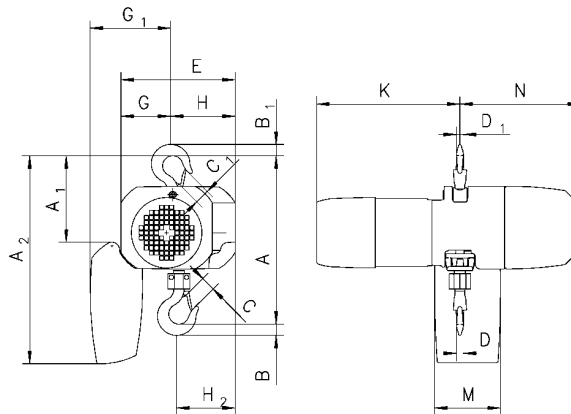
Technical data trolleys

Suitable for Model	Capacity kg	Size	Flange width mm	Curve radius min. m	Electric trolleys			
					Travel speed m/min at 50 Hz		Travel motor kW at 50 Hz	
from CPM 1-8 to CPMF 10-4	1000	A	58 - 180	0,90	18 or 18/4,5	0,18 or 0,18/0,06	18/4,5	0,18 or 0,18/0,06
from CPM 10-8 to CPMF 20-4	2000	A	58 - 180	1,15	18 or 18/4,5	0,18 or 0,18/0,06	18/4,5	0,18 or 0,18/0,06
	2000	B	180 - 300	1,15	18 or 18/4,5	0,18 or 0,18/0,06	18/4,5	0,18 or 0,18/0,06

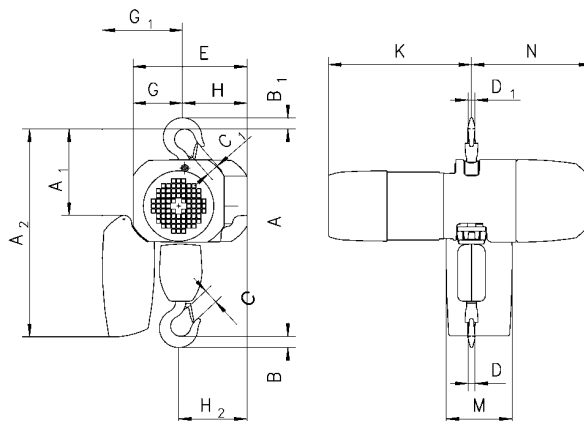
Dimensions in mm

Dimension	CPM/ CPMF 1-8	CPM/ CPMF 1-12	CPM/ CPMF 2-8	CPM/ CPMF 3-6	CPM/ CPMF 3-12	CPM/ CPMF 5-4	CPM/ CPMF 5-8	CPM/ CPMF 6-6	CPM/ CPMF 6-12	CPM/ CPMF 10-4	CPM/ CPMF 10-8	CPM/ CPMF 12-6	CPM/ CPMF 20-4
A	317	317	317	397	365	397	365	480	455	480	455	565	565
A ₁	167	167	167	167	205	167	205	205	252	205	252	252	252
A ₂ (8 m)	409	409	409	409	-	409	-	-	589	-	589	589	589
A ₂ (9 m)	-	-	-	-	497	-	497	497	-	497	-	-	-
B	22	22	22	22	22	22	22	29,5	29,5	29,5	29,5	40,5	40,5
B ₁	22	22	22	22	29,5	22	29,5	29,5	40,5	29,5	40,5	40,5	40,5
C	27	27	27	27	27	27	27	32	32	32	32	40	40
C ₁	27	27	27	27	32	27	32	32	40	32	40	40	40
D	14	14	14	14	14	14	14	14	19,5	19,5	19,5	26,5	26,5
D ₁	14	14	14	14	14	14	19,5	14	26,5	19,5	26,5	26,5	26,5
E	225	225	225	225	250	225	250	250	280	250	280	280	280
G	102	102	102	102	110	102	110	110	127	110	127	163	163
G ₁ (8 m)	163	163	163	163	-	163	-	-	237	-	237	237	237
G ₁ (9 m)	-	-	-	-	179	-	179	179	-	179	-	-	-
H	123	123	123	123	140	123	140	140	153	140	153	117	117
K (CPM)	285	285	285	285	285	285	285	285	345	285	345	345	345
K (CPMF)	310	310	310	310	365	310	365	365	390	365	390	390	390
M (8 m)	130	130	130	130	-	130	-	-	180	-	180	180	180
M (9 m)	-	-	-	-	150	-	150	150	-	150	-	-	-
N	240	240	240	240	294	240	294	294	295	294	295	295	295

Model CPM
with suspension hook, single fall
125 - 1.000 kg



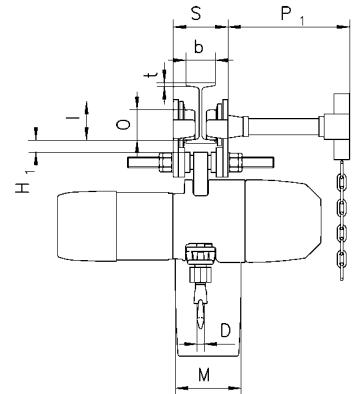
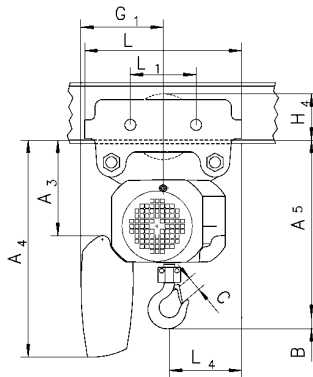
Model CPM
with suspension hook, double fall
320 - 2.000 kg



Dimensions in mm

Dimension	CPM/ CPMF 1-8	CPM/ CPMF 1-12	CPM/ CPMF 2-8	CPM/ CPMF 3-6	CPM/ CPMF 3-12	CPM/ CPMF 5-4	CPM/ CPMF 5-8	CPM/ CPMF 6-6	CPM/ CPMF 6-12	CPM/ CPMF 10-4	CPM/ CPMF 10-8	CPM/ CPMF 12-6	CPM/ CPMF 20-4
A ₃	185	185	185	185	205	185	205	205	193	205	193	193	193
A ₄ (8 m)	427	427	427	427	-	427	-	-	530	-	530	530	530
A ₄ (9 m)	-	-	-	-	497	-	497	497	-	497	-	-	-
A ₅	335	335	335	415	365	415	365	480	396	480	396	506	506
H ₁	24	24	24	24	24	24	24	24	23,5	24	23,5	23,5	23,5
H ₂	111	111	111	132	122	132	122	144	152	144	152	116	116
H ₃	129	129	129	129	129	129	129	129	128	129	128	128	128
H ₄ VTG	91,5	91,5	91,5	91,5	91,5	91,5	91,5	91,5	90,5	91,5	90,5	90,5	90,5
H ₄ VTE	125	125	125	125	125	125	125	125	110	125	110	110	110
I	76,5	76,5	76,5	76,5	76,5	76,5	76,5	76,5	98	76,5	98	98	98
L VTP/VTG	310	310	310	310	310	310	310	310	360	310	360	360	360
L VTE (CPM)	410	410	410	410	410	410	410	410	435	410	435	435	435
L VTE (CPMF)	420	420	420	420	420	420	420	420	445	420	445	445	445
L ₁	130	130	130	130	130	130	130	130	150	130	150	150	150
L ₂ (CPM)	255	255	255	255	255	255	255	255	255	255	255	255	255
L ₂ (CPMF)	265	265	265	265	265	265	265	265	265	265	265	265	265
L ₃	155	155	155	155	155	155	155	155	180	155	180	180	180
L ₄	143	143	143	164	137	164	137	159	179	159	179	179	179
O	60	60	60	60	60	60	60	60	80	60	80	80	80
P	187	187	187	187	187	187	187	187	187	187	187	187	187
P ₁	295	295	295	295	295	295	295	295	295	295	295	295	295
S	b + 50	b + 50	b + 50	b + 50	b + 50	b + 50	b + 50	b + 50	b + 54	b + 50	b + 54	b + 54	b + 54
T	97	97	97	97	97	97	97	97	97	97	97	97	97
t	19	19	19	19	19	19	19	19	19	19	19	19	19

**Model CPM
with integral manual
push or geared trolley**



**Model CPM
with integral electric trolley**

