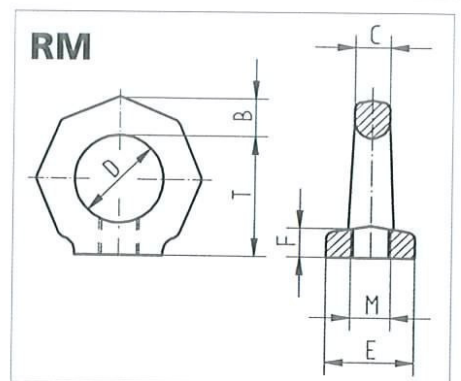
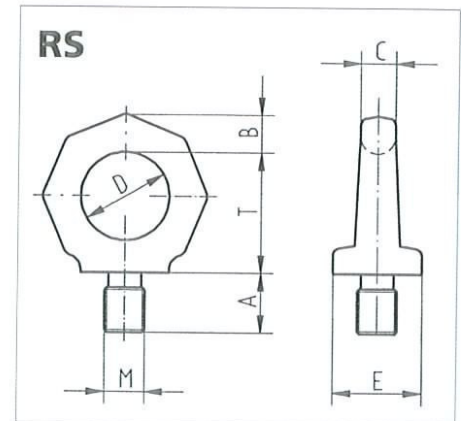


# Eye bolt/-nut - RS/RM

...high tensile



When RUD RM eye nuts are connected with a bolt, the bolt quality should be at least CL8.8.

Type	WLL (t)	A	B	C	D	E	F	M	T	Weight kg (pce).	Ref.-No.	
											RS	RM
RS - M 6	0,1	12	11	10	25	25	11	6	35	0,1	61 401	55 254
RS - M 8	0,2	12	11	10	25	25	11	8	35	0,1	61 402	55 255
RS - M 10	0,25	15	11	10	25	25	11	10	35	0,1	56 397	55 258
RS - M 12	0,4	18	13	12	30	30	12	12	41	0,2	56 398	55 271
RS - M 14	0,75	21	15	14	35	35	13	14	48	0,25	56 403	55 281
RS - M 16	1	24	15	14	35	35	13	16	48	0,3	56 404	55 460 (800 kg)
RS - M 20	1,5	30	17	16	40	40	16	20	55	0,45	56 407	55 343
RS - M 24	2	36	21	20	50	50	20	24	70	0,7	56 408	55 394
RS - M 30	3	45	26	24	60	60	25	30	85	1,6	56 409	55 438
RS - M 36	4	54	43	38	90	100	37	36	130	6,0	56 954	53 093
RS - M 42	6	53	43	38	90	100	37	42	130	6,2	56 955	53 095
RS - M 48	8	68	43	38	90	100	37	48	130	6,4	56 956	53 098

- Also available in imperial and special threads.
- Before lifting check the tightness of the eye bolt and nut! Avoid rotating movement during transport.
- Assure a plane bolting surface.
- Distinguished from standard eye bolts and standard eye nuts by the red colour and shape = 8 edged, means Grade 8 quality.
- Marking: = clear indication of WLL for the most unfavourable lateral load direction (not allowed with standard eye bolt DIN 580).

- Forged, material 1.6541, high tensile heat treated, 100% electromagnetic crack detection acc. to EN 1677-1.
- Design factor 4:1  
Work piece material must be at least St 37 (1.0037).
- With the eye nut "RM", the nut thread has to be 100% engaged on the bolt thread.
- Attention:  
Unintentional turn out can happen – therefore tightness has to be checked before use.