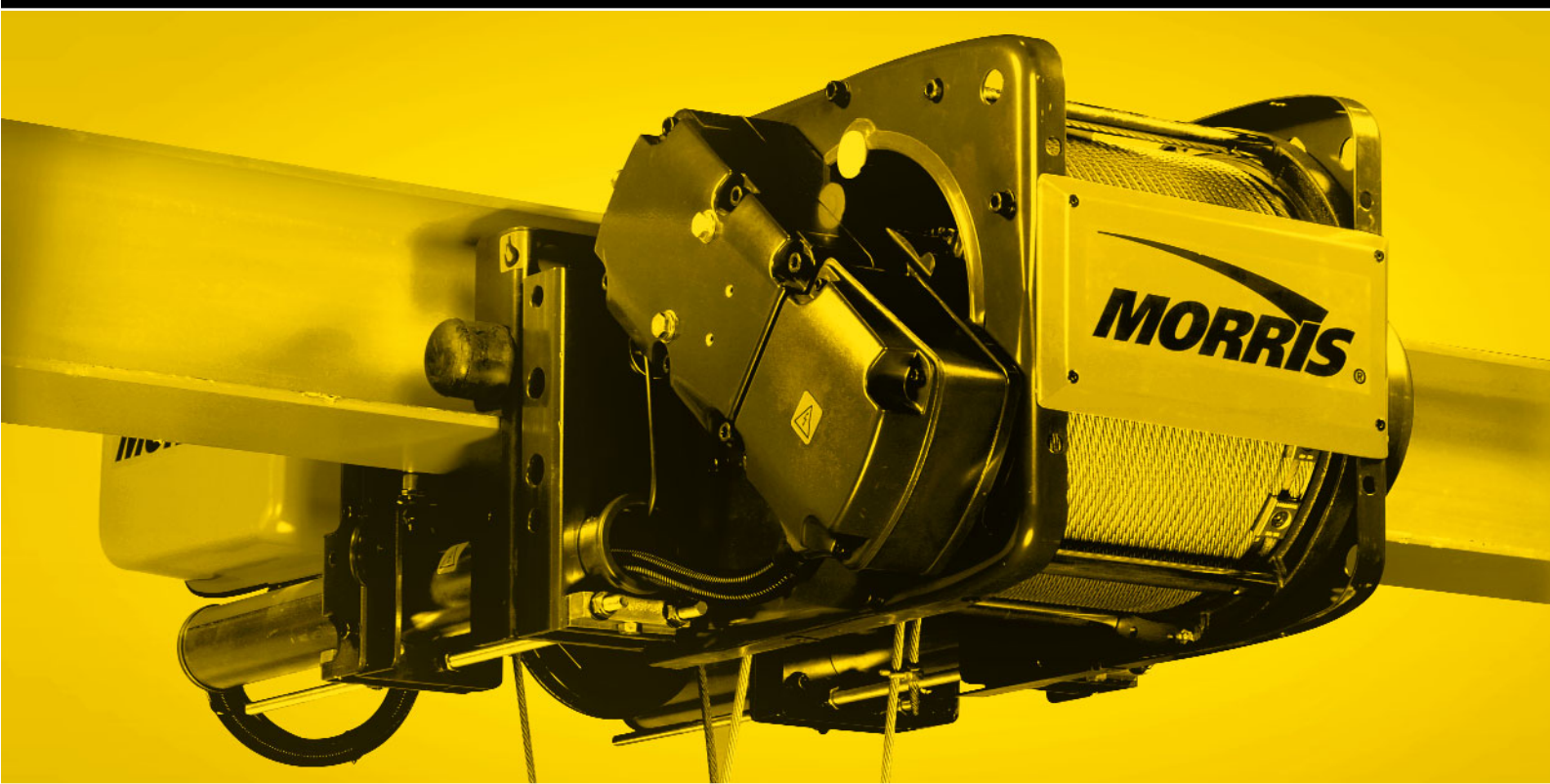


S4 WIRE ROPE HOISTS



EXPERIENCE THE DIFFERENCE

# S4 WIRE ROPE HOISTS

## Range

Whichever way you look at the Morris S4 it's versatility, ease of use and reduced cost of ownership shines through. Be it the large rope drum to increase rope life and deliver the lowest headrooms available or the brakes designed to last the life of the hoist with no adjustment, or the improved hook approaches, in the S4 every innovation delivers value. From every angle the Morris S4 is cutting edge technology in wire rope hoists.

In capacities from 500kg to 80t and in a wide range of configurations the Morris S4 is the right choice for overhead travelling cranes of all types and many other applications. Standard units designed to meet or exceed FEM 1Am, 2m or 3m ratings and explosion proof units are available to suit hazardous environments meeting or exceeding international standards.

Within the standard range of Morris S4 hoists up to 99m height of lift can be achieved. This is thanks to the new compact hoist drum design that minimises drum length giving near true vertical lift in all single reeved units, sway is also minimised through the same design insight. True vertical lift is available as an option.

Look in detail at the specification of every S4 hoist and you will find quality in abundance, outstanding motor design that incorporates inverter control on trolleys with options for hoist inverter control, readily available.

With a choice of configurations, low and normal headroom, single and double girder trolleys, each model has a wide range of options and features available, so you will get precisely the right hoist for your application. In addition to this foot mounted hoists and customised hoists are included in the Morris S4 range.

## Range Overview

### S4 Hoist with Low Headroom Trolley

With very low headroom and minimal hook approaches the S4 Hoist with integrated Low Headroom Trolley is the ideal unit for single girder low headroom cranes. Capacities up to 12.5t.

### S4 Hoist with Standard Headroom Trolley

The S4 Hoist with Standard Headroom Trolley is ideal for installation at locations with limited lateral space. It is also ideal for extreme hoisting heights and heavy loads. Capacities up to 40t.

### S4 Hoist with Double Girder Trolley

As with all Morris hoist and trolley combinations the Morris S4 hoist with Double Girder trolley incorporates powerful long life lifting and travelling motors. These are available with the hoist mounted in low, medium or high configurations. Capacities up to 80t.

### S4 Fixed Hoist

The S4 fixed hoist is ideal for free-standing, suspended or wall-mounted installation. Capacities up to 80t.



### S4 Hoist with Low Headroom Trolley

The ideal solution for single girder cranes.

### S4 Hoist with Standard Headroom Trolley

Incorporating a motorised trolley for single girder applications including monorails.



**S4 Hoist with Double Girder Trolley**

Available in low, medium and high configurations.

**S4 Fixed Hoist**

Ideal for free-standing, suspended or wall-mounted installation.

# S4 WIRE ROPE HOISTS

## Detail

### General S4 Specification

- Two speed (6/1) hoist motors or with optional hoist frequency inverters
- 4-step geared limit switch
- Overload protection
- Overheating protection for the lifting motors
- Trolley drives with frequency inverter control
- Electronic hoist monitoring system as an option
- IP55 protection for motors and electrical enclosures
- Motor insulation class F
- Load hook with hook safety latch
- Ergonomic hook

### Specialist Applications

#### S4 Customised Hoists

A specialised hoist for unconventional applications. Configured to the application specifically, machinery hoists may lift or winch and may have more than one rope.

#### S4 Explosion Proof Hoists

The incorporation of explosion proof technology makes the S4 suitable for use in hazardous environments.

### Brakes and Motors

All S4 hoists have the latest generation 6/1 two speed hoist motors as standard. Providing an ED rating of 60%. Combined with inverters on the trolley a smooth operation is ensured when lifting and transporting any load. Where enhanced hoisting control is required hoist inverters are available.

### The S4 Saving You Money

#### Adjustment free brakes

The hoist brake on the S4 is designed to withstand 1 million operations and last the (FEM) life of the hoist without adjustment.

#### Reducing Rope Wear

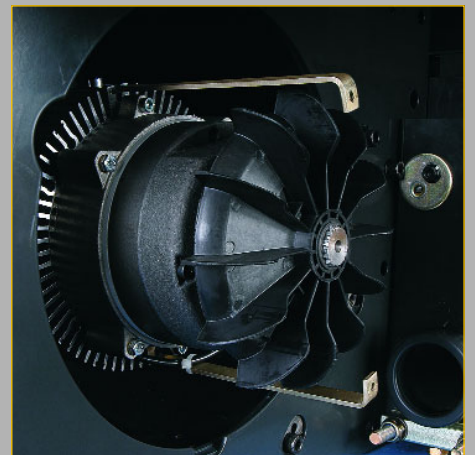
Designing the S4 with a large diameter drum has many advantages. By reducing the stress and bending forces on the hoisting rope the life of the rope is dramatically increased reducing the cost of ownership compared to hoists with smaller diameter longer drums.

#### Compact Design

The advantage of the compact design of the S4 is to make areas that were previously inaccessible to cranes available. The smaller dimensions can reduce the overall cost of new buildings. When the S4 is used to replace an existing hoist, areas of the building not covered by lifting equipment previously become available.

#### High Quality Components

Hardened and ground gears, heavy duty bearings, IP55 enclosure protection throughout gives a hoist that is built to perform and designed to last.



### Motor

High performance fan cooled hoist motors delivering 60% ED specifically designed for the S4 range.

### Twin motors

Fitted to high capacity S4's improve performance and increase safety.

### Brakes

Designed to work for the (FEM) life of the hoist without adjustment, in excess of 1 million operations.



#### **Gearbox**

Totally enclosed, heavy duty gearbox. Hardened ground helical gears run in a semi-fluid grease.



#### **Rope Drum**

The heavy duty large diameter rope drum extends rope life and is fitted with a cast iron rope guide and heavy duty bearings.



#### **Bottom Block**

Bottom block ergonomically designed for ease of use.

# S4 WIRE ROPE HOISTS

## Accessories

The S4 is one of the most highly specified hoists in today's competitive marketplace. However, with our many years experience we know that the unique demands and the specifics of your business may mean you need some additions to the standard specification.

### Hoist Condition Monitoring

The Morris Mtron brings modern hoist management into the workplace. The Mtron provides INCREASED SAFETY, INCREASED PRODUCTIVITY and REDUCED DOWNTIME.

#### Mtron 4100

The Morris MTron 4100 provides soft start / stops and directional changes for faster positioning and load handling, optimum productivity and reduced wear and stress on equipment. It increases safety by providing protection against overloading, automatically switches from fast to slow speed when the load increases rapidly to reduce impact forces on the crane and also monitors motor temperatures. Intermediate load limits and slack rope detection are also available as options.

**Adding to the above features further versions of the Mtron are available;**

#### Mtron 4200

This system measures and provides valuable data on the actual operating activity and performance of the hoist. This information allows for effective maintenance planning and costing based on actual hoist usage minimising downtime.

#### Mtron 4300

For ease of use and increased safety the Mtron 4300 enables usage and condition data, such as load indication, motor temperature and safe working period to be viewed from a visual display unit on the pendant control unit.

#### Mtron 4400

For cranes with more than one hoist the Mtron 4400 provides load summation. Essential where the capacity of the crane or support structure is less than the combined capacity of the hoists.

#### Mtron 4500

To meet the demands of today's advanced applications such as automated systems this version of the Mtron allows data exchange via RS232 data interface with PC or PLC.

**Other optional features for the S4 hoist include;**

#### Hoist Inverters

Where ultra smooth operation is required or very precise load movements, in addition to inverters fitted as standard on the hoist trolley, sophisticated Morris VF range of inverters can be supplied to provide advanced hoisting control.

#### Radio Controls

There is a full range of radio remote control units available for the S4, to increase safety and improve efficiency in the workplace.

**Increased enclosure protection, second hoist brakes, additional limit positions, multiple rope reeving and non standard hoisting speeds are also amongst the options available.**



Mtron

Pendant Display

Radio/Remote Control

## Why... Morris Hoists?

When you choose products carrying the Morris name you can do so with total confidence.

Over a century of experience in the design and manufacture of every type of materials handling equipment makes the Morris brand a world leader. The Morris name has been synonymous with lifting equipment, from hand chain hoists to the most complex overhead cranes and material handling systems used in industry.

Our hoists are developed from extensive R & D and our advanced in-house design software. Engineering, design and manufacturing excellence combined with a total understanding of lifting needs, enable us to offer the most comprehensive range of hoists available in the world today.

Whatever the requirement, Morris Material Handling can provide the solution.

### Experience Total Quality

Morris' reputation for engineering and manufacturing excellence is outstanding. Our quality management system has been certified to ISO 9001:2000. We rigidly maintain this standard to ensure that products supplied are inherently safe, reliable and meet customer specifications.

The Morris S4 Wire Rope Hoist is designed and manufactured to meet the highest standards required and to incorporate the latest technological advances. Standard units are designed to meet or exceed international standards. The S4 is fully compliant with all European Machinery Directive (CE) requirements.

### Experience Versatility

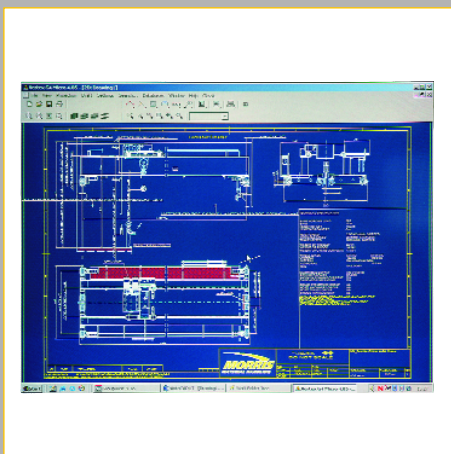
Morris products are produced to the highest levels of quality, strength and durability to provide supreme performance.

The Morris S4 design incorporates, remarkably smooth movements and fast load positioning, reducing material handling times, increasing productivity and allowing for quick and accurate material handling.

In the Morris S4 safety and reliability are enhanced by excellent power transmission and braking systems, two speed hoisting and smooth inverter controlled travelling movements, providing many years of trouble free operation.

### Experience Total After Sales Support

At Morris, we support our products for the whole of their working life. All hoists require routine servicing and parts replacement. To provide the best service and eliminate costly downtime, we have access to thousands of parts available from our UK manufacturing and customer support centre.



Advanced In-house Design Software



UK based manufacturing and customer support facility



Comprehensive spare parts stocks

**HOISTS**

**CRANES**

**PARTS**

**MODERNISATION**

**TRAINING**

**SERVICE**

**UNITED KINGDOM**

**Morris Material Handling Limited**  
PO Box 7  
North Road  
Loughborough  
Leicestershire  
LE11 1RL  
T: +44(0)1509 643200  
F: +44(0)1509 610666

**SAUDI ARABIA**

**Eastern Morris Crane Company**  
PO Box 13793  
Dammam 31414  
Kingdom of Saudi Arabia  
T: +9663 8473232 ext 101  
F: +9663 8472367

**SINGAPORE**

**Morris Material Handling Pte. Ltd**  
19A Tech Park Crescent  
Tuas Tech Park  
Singapore 637846  
T: +656 863 8122  
F: +656 863 8127

**THAILAND**

**Morris (Thailand) Co. Ltd**  
231/3-4 Soi Wat Pai Ngren  
Thungwatdon  
Sathorn  
Bangkok 10120  
Thailand  
T: +66 2 2211 2939  
F: +66 2 2212 1233