

Series 5122 Portable Davit Cranes

Hand Winch Operation Up to 225 kg capacity

Ordering your crane is as easy as 1...2...3...
 Select the option that best suits your needs for each item. Fill in the boxes below to create your crane part number.

1 Crane	2 Winch	3 Optional Finish*
5122		

i.e. 5122M1GAL

*Leave blank for standard powder coat finish

4 Order your **Base, Wire Rope Assembly** and **Optional Accessories** separately. See next page.

■ **Two-year Limited Warranty**

 Cranes
 Section 4

Crane Model

- **Adjustable Boom** with 2 different positions for operation.
- **Crane Rotates 360°** in a sleeve bearing in the base.
- **Crane** folds down for storage or transport.

1 Base Model 5122 – Section 4

base model	description	approx. ship wt.
5122 ¹	up to 225 kg – portable davit	25 kg

Please contact factory or nearest Thern Distributor for firm fixed price and delivery.

¹ Base Model includes corrosion resistant electrostatic powder coated finish. Other finishes available see Option 3.

Winch Models

- **Hand Winch Operation** with spur gear hand winch equipped with automatic disc brake for load control.
- **Quick Disconnect Anchor** for quickly attaching or removing wire rope equipped with a swaged ball fitting.

2 Winch Options – Section 4

winch	description	approx. ship wt.
M1	M4022PB-K – zinc plated spur gear hand winch	8 kg
M3	M4042PBSS-K – stainless steel spur gear hand winch	11 kg

Optional Finishes

- **Galvanized Finish** provides extra protection against corrosion.
- **Stainless Steel Models** are constructed from all stainless steel with an electro-polished finish for superior corrosion resistance.

3 Optional Finish (crane only) – Section 4

finish	description
GAL	galvanized finish – crane only
SS	stainless steel construction – crane only

4 Series 5122 Bases, Wire Rope Assemblies and Accessories
INDEPENDENT BASES – sold separately

- **Pedestal, Socket, or Wall** mount style.
- **Important:** Base installation is purchaser's responsibility. Thern recommends consulting a civil engineer or other qualified professional. Contact factory for installation guidelines.

Independent Bases – Section 4

base	description	approx. ship wt.
522	pedestal/socket base – powder coat finish (upright or flush mount)	9 kg
522GAL	pedestal/socket base – galvanized finish (upright or flush mount)	9 kg
522SS	pedestal/socket base – stainless steel (upright or flush mount)	9 kg
522W	wall mount base – powder coat finish	10 kg
522WGAL	wall mount base – galvanized finish	10 kg
522SSW	wall mount base – stainless steel	10 kg

ACCESSORIES – Section 4

Base Cover – plastic cover fits in the mast hole in the base to help keep water from collecting inside the base when the crane is removed.



Model No. TK2P

Cable Spool – 316 stainless steel reel winds up wire rope when detached from crane.

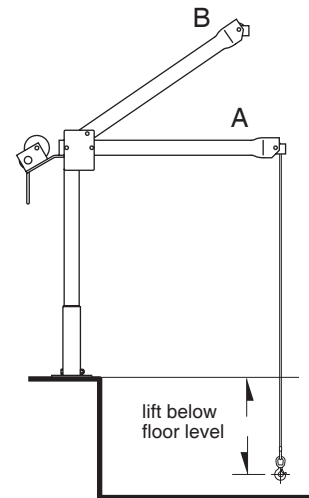


Model No. RW50 6 kg

Wire Rope Keeper – metal bracket attaches to base or other structure to hold free end of the wire rope when detached from crane.



Model No. B1766


Series 5122 Performance Characteristics

wire rope dia.	wire rope length	5122 Series with M1 winch		5122 Series with M3 winch		lift below floor level (min – max) ¹
		load rating position A	load rating position B	load rating position A	load rating position B	
5 mm	6 m	225 kg	225 kg	225 kg	225 kg	2,7 – 3 m
5 mm	8,5 m	225 kg	225 kg	225 kg	225 kg	5,2 – 5,5 m
5 mm	11 m	225 kg	225 kg	225 kg	225 kg	7,6 – 8 m
5 mm	13,7 m	225 kg	225 kg	225 kg	225 kg	10,4 – 10,7 m
5 mm	18,3 m	–	–	225 kg	225 kg	15 – 15,2 m
5 mm	22,9 m	–	–	225 kg	225 kg	19,5 – 19,8 m

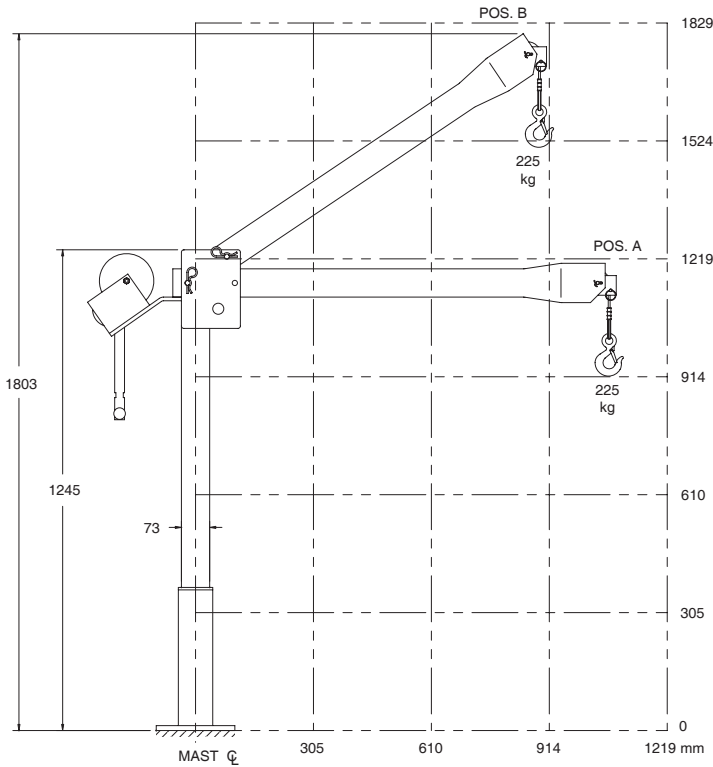
¹ Lift below floor level varies depending on boom position and base configuration. For longer lifts, please contact factory.

Important:

It is the owner's or operator's responsibility to determine the suitability of the equipment to its intended use. Study all applicable codes, manuals, and regulations. Be sure to read the Owner's Manual supplied with the equipment before operating it.

See Dimensions on Next Page

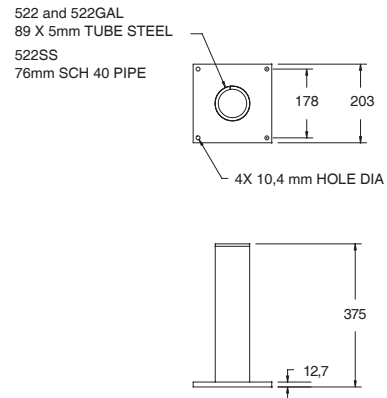
5122 with pedestal/socket base mounted upright



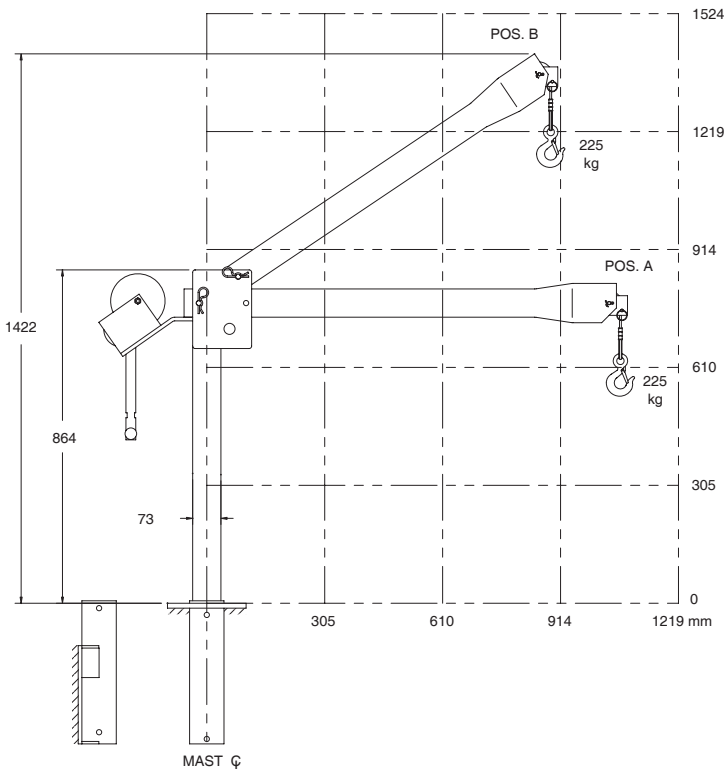
5122 Upright – Height and Reach

boom position	hook reach	hook height
A	1067 mm	940 mm
B	889 mm	1524 mm

Dimensions are for reference only and subject to change without notice.



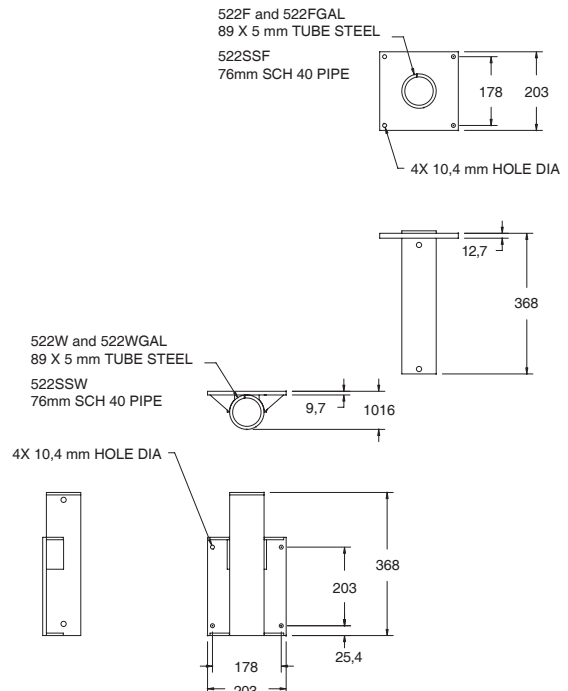
5122 with wall mount base or pedestal/socket base mounted flush



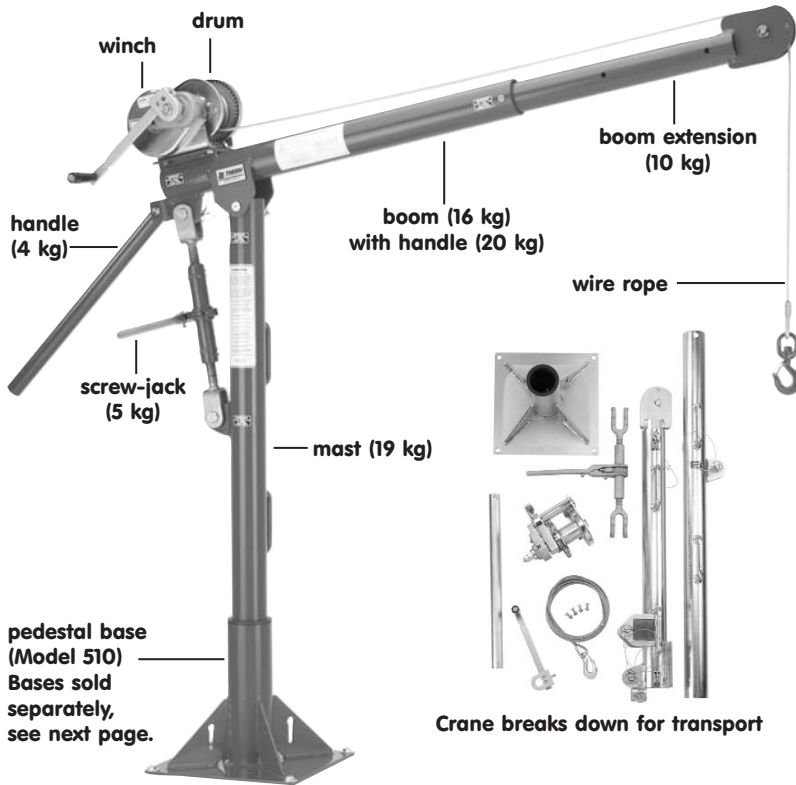
5122 Flush – Height and Reach

boom position	hook reach	hook height
A	1067 mm	559 mm
B	889 mm	1143 mm

Dimensions are for reference only and subject to change without notice.



See Additional Dimensions on Next Page

Model 5110M1 with pedestal base

**Series 5110
Portable Davit
Cranes**
**Hand or Power Winch Operation
Up to 450 kg capacity**
Ordering your crane is as easy as 1...2...3... Select the option that best suits your needs for each item. Fill in the boxes below to create your crane part number.

1 Crane	2 Optional Winch	3 Finish*
5110		

i.e. 5110M2GAL

*Leave blank for standard powder coat finish

4 Order your Base, Wire Rope Assembly and Optional Accessories separately. See next page.
■ Two-year Limited Warranty
Crane Model

- **Crane Rotates 360°** on a pin and sleeve bearing in the base. Handle on the boom makes rotation easy.
- **Adjustable Boom** telescopes to 4 different lengths, and adjusts in height while under load with ratchet style screw-jack.
- **Crane Breaks Down** for storage or transport.

1 Crane Model 5110 – Section 4

base model	description	approx. ship wt.
5110 ¹	up to 450 kg – portable davit	73 kg

Please contact factory or nearest Thern Distributor for firm fixed price and delivery.

¹ Base Model includes corrosion resistant electrostatic powder coated finish. Other finishes available see Option 3.

Winch Models

- **Hand Winch Operated Models** include spur gear or worm gear hand winch with brake for load control.
- **Quick Disconnect Anchor** for quickly attaching or removing wire rope equipped with a swaged ball fitting.

2 Winch Options – Section 4

winch	description	approx. ship wt.
M1	M4312PB-K – zinc plated spur gear hand winch	71 kg
M3	M4312PBSS-K – stainless steel spur gear hand winch	28 lb

Optional Finishes

- **Galvanized Finish** provides extra protection against corrosion.
- **Stainless Steel Models** are constructed from all stainless steel with an electro-polished finish for superior corrosion resistance.

3 Optional Finish (crane only) – Section 4

finish	description
GAL	galvanized finish – crane only
SS	stainless steel construction – crane only

4 Series 5110 Bases, Wire Rope Assemblies and Accessories
INDEPENDENT BASES – sold separately

- **Pedestal, Socket, or Wall** mount style.
- **Important:** Base installation is purchaser's responsibility. Thern recommends consulting a civil engineer or other qualified professional. Contact factory for installation guidelines.

Independent Bases – Section 4

base	description	approx. ship wt.
510	pedestal base – powder coat finish (upright mount)	24 kg
510GAL	pedestal base – galvanized finish (upright mount)	24 kg
510SS	pedestal base – stainless steel (upright mount)	24 kg
510F	socket base – powder coat finish (flush mount)	21 kg
510FGAL	socket base – galvanized finish (flush mount)	21 kg
510SSF	socket base – stainless steel (flush mount)	21 kg
510W	wall mount base – powder coat finish	24 kg
510WGAL	wall mount base – galvanized finish	24 kg
510SSW	wall mount base – stainless steel	24 kg

ACCESSORIES – Section 4

Base Cover – plastic cover fits in the mast hole in the base to help keep water from collecting inside the base when the crane is removed.



Model No. TK3P

Cable Spool – 316 stainless steel reel winds up wire rope when detached from crane.

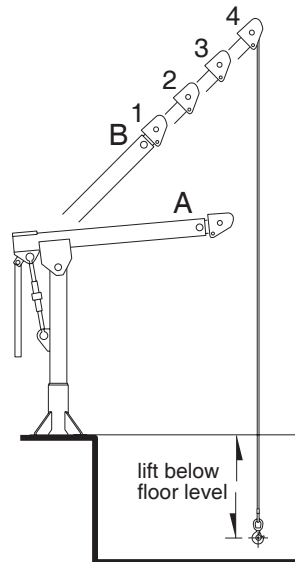


Model No. RW50 6 kg

Wire Rope Keeper – metal bracket attaches to base or other structure to hold free end of the wire rope when detached from crane.



Model No. B1766


Important:

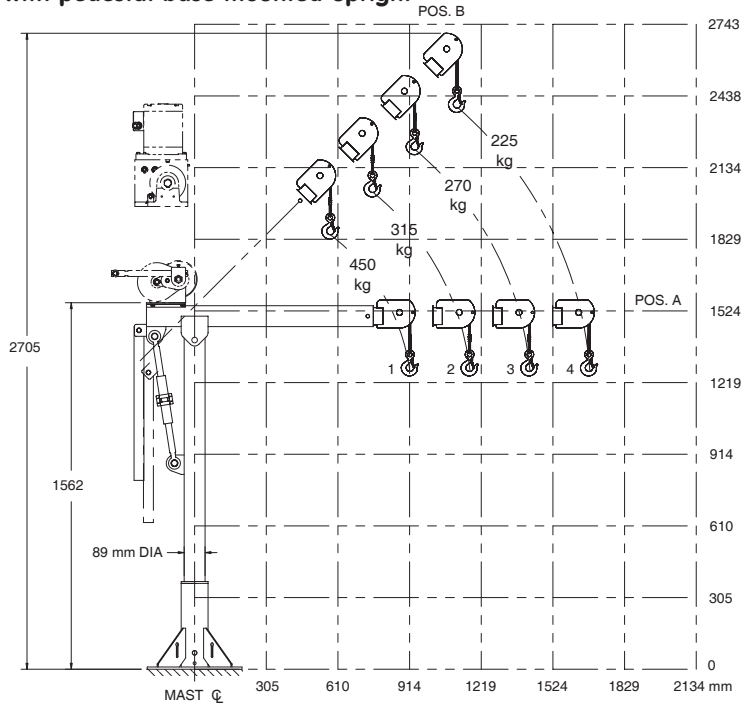
It is the owner's or operator's responsibility to determine the suitability of the equipment to its intended use. Study all applicable codes, manuals, and regulations. Be sure to read the Owner's Manual supplied with the equipment before operating it.

Series 5110 Performance Characteristics

wire rope dia.	wire rope length	load rating for 5110M1 and M3				lift below floor level (min – max) ¹
		position 1	position 2	position 3	position 4	
6,4 mm	6 m	450 kg	315 kg	270 kg	225 kg	.3 – 1.5 m
6,4 mm	8,5 m	450 kg	315 kg	270 kg	225 kg	2,7 – 4 m
6,4 mm	11 m	450 kg	315 kg	270 kg	225 kg	5,2 – 6,4 m
6,4 mm	13,7 m	450 kg	315 kg	270 kg	225 kg	8 – 9 m
6,4 mm	18,3 m	450 kg	315 kg	270 kg	225 kg	12,5 – 13,7 m
6,4 mm	22,9 m	–	–	–	–	17 – 18,3 m

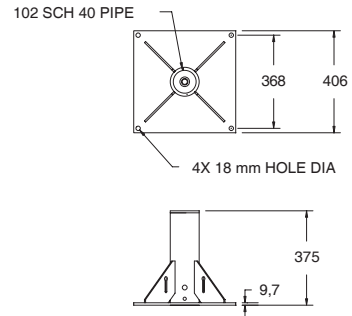
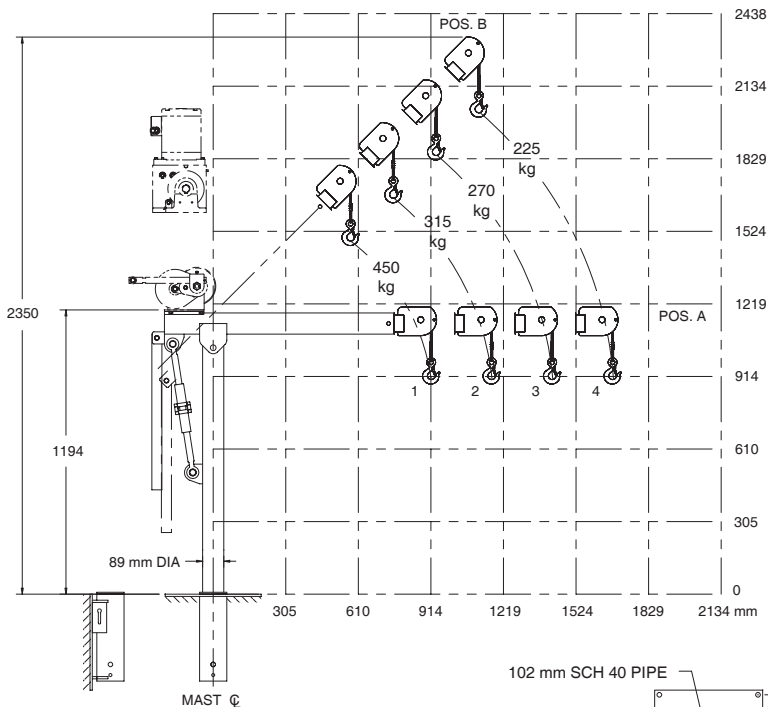
¹ Lift below floor level varies depending on boom position and base configuration. For longer lifts, please contact factory.

See Dimensions on Next Page

5110 with pedestal base mounted upright

5110 Upright – Height and Reach

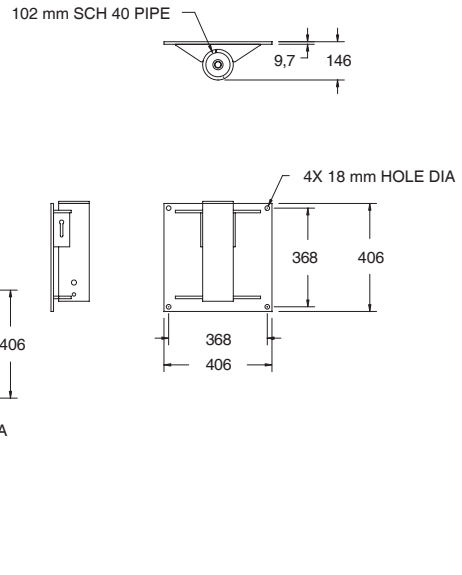
boom position	hook reach	hook height
A-1	910 mm	1270 mm
A-2	1168 mm	1270 mm
A-3	1422 mm	1270 mm
A-4	1676 mm	1270 mm
B-1	584 mm	1854 mm
B-2	762 mm	2032 mm
B-3	940 mm	2210 mm
B-4	1118 mm	2388 mm

Dimensions are for reference only and subject to change without notice.


5110 with wall mount base or socket base mounted flush

5110 Flush – Height and Reach

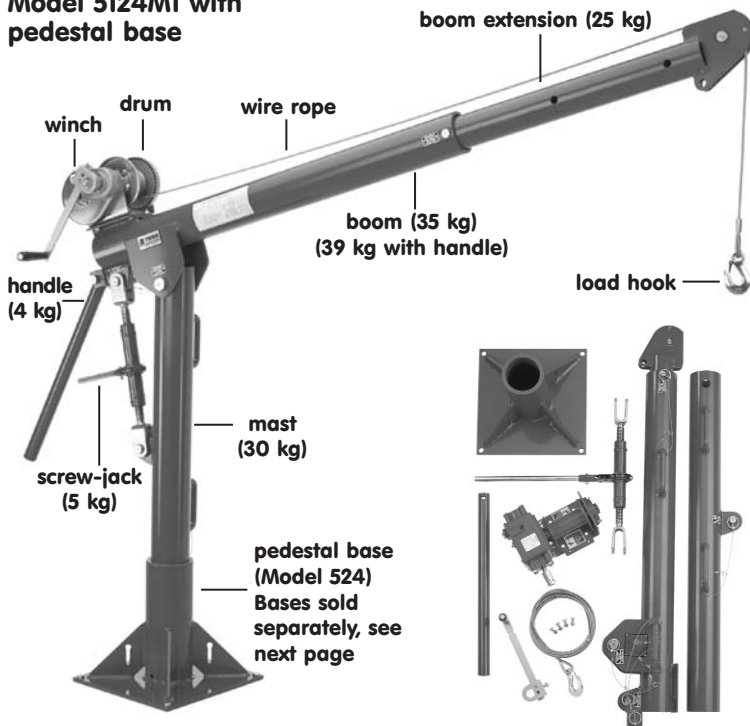
boom position	hook reach	hook height
A-1	910 mm	914 mm
A-2	1168 mm	914 mm
A-3	1422 mm	914 mm
A-4	1676 mm	914 mm
B-1	584 mm	1499 mm
B-2	762 mm	1676 mm
B-3	940 mm	1854 mm
B-4	1118 mm	2032 mm

Dimensions are for reference only and subject to change without notice.



See Additional Dimensions on Next Page

Model 5124M1 with pedestal base



Crane breaks down for transport

Series 5124 Portable Davit Cranes

 Hand or Power Winch Operation
 Up to 900 kg capacity

Ordering your crane is as easy as 1...2...3...

Select the option that best suits your needs for each item. Fill in the boxes below to create your crane part number.

1 Crane	2 Optional Winch	3 Finish*
5124		

i.e. 5124M2GAL

*Leave blank for standard powder coat finish

4 Order your **Base, Wire Rope Assembly** and **Optional Accessories** separately. See next page.

■ **Two-year Limited Warranty**

Crane Model

- **Crane Rotates 360°** on a pin and sleeve bearing in the base. Handle on the boom makes rotation easy.
- **Adjustable Boom** telescopes to 4 different lengths, and adjusts in height while under load with ratchet style screw-jack.
- **Crane Breaks Down** for storage or transport.

1 Crane Model 5124 – Section 4

base model	description	approx. ship wt.
5124 ¹	up to 900 kg – portable davit	115 kg

Please contact factory or nearest Thern Distributor for firm fixed price and delivery.

¹ Base Model includes corrosion resistant electrostatic powder coated finish. Other finishes available see Option 3.

Winch Models

- **Hand Winch Operated Models** include spur gear or worm gear hand winch with brake for load control.
- **Quick Disconnect Anchor** for quickly attaching or removing wire rope equipped with a swaged ball fitting.

2 Winch Options – Section 4

winch	description	approx. ship wt.
M1	M4312PB-K – zinc plated spur gear hand winch	13 kg
M3	M4312PBSS-K – stainless steel spur gear hand winch	13 kg

Optional Finishes

- **Galvanized Finish** provides extra protection against corrosion.
- **Stainless Steel Models** are constructed from all stainless steel with an electro-polished finish for superior corrosion resistance.

3 Optional Finish (crane only) – Section 4

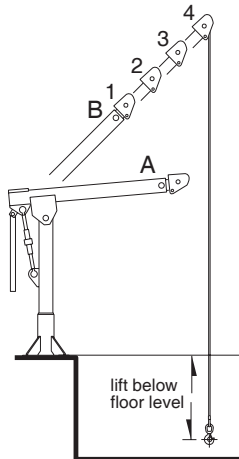
finish	description
GAL	galvanized finish – crane only
SS	stainless steel construction – crane only

4 Series 5124 Bases, Wire Rope Assemblies and Accessories
INDEPENDENT BASES – sold separately

- **Pedestal, Socket, or Wall** mount style.
- **Important:** Base installation is purchaser's responsibility. Thern recommends consulting a civil engineer or other qualified professional. Contact factory for installation guidelines.

Independent Bases – Section 4

base	description	approx. ship wt.
524	pedestal base – powder coat finish (upright mount)	32 kg
524GAL	pedestal base – galvanized finish (upright mount)	32 kg
524SS	pedestal base – stainless steel (upright mount)	32 kg
524F	socket base – powder coat finish (flush mount)	27 kg
524FGAL	socket base – galvanized finish (flush mount)	27 kg
524SSF	socket base – stainless steel (flush mount)	27 kg
524W	wall mount base – powder coat finish	39 kg
524WGAL	wall mount base – galvanized finish	39 kg
524SSW	wall mount base – stainless steel	39 kg


Important:

It is the owner's or operator's responsibility to determine the suitability of the equipment to its intended use. Study all applicable codes, manuals, and regulations. Be sure to read the Owner's Manual supplied with the equipment before operating it.

ACCESSORIES – Section 4

Base Cover – plastic cover fits in the mast hole in the base to help keep water from collecting inside the base when the crane is removed.



Model No. TK4P

Cable Spool – 316 stainless steel reel winds up wire rope when detached from crane.



Model No. RW50 6 kg

Wire Rope Keeper – metal bracket attaches to base or other structure to hold free end of the wire rope when detached from crane.



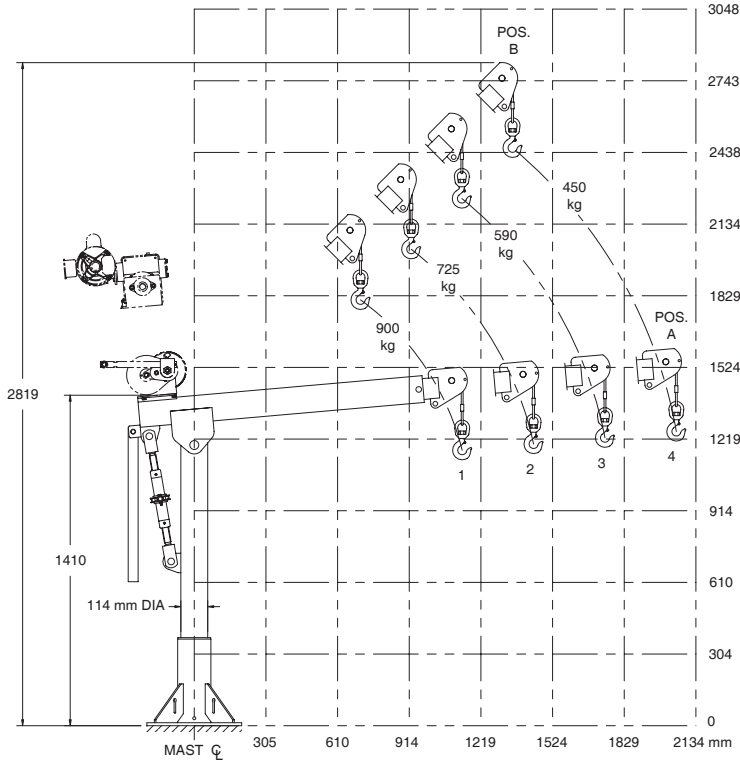
Model No. B1766

Series 5124 Performance Characteristics

wire rope dia.	wire rope length	load rating for 5124M1 and M3				lift below floor level (min – max) ¹
		position 1	position 2	position 3	position 4	
6,4 mm	6 m	900 kg	725 kg	590 kg	450 kg	0 – 1,2 m
6,4 mm	8,5 m	815 kg	725 kg	590 kg	450 kg	2,4 – 3,6 m
6,4 mm	11 m	725 kg	725 kg	590 kg	450 kg	4,8 – 6 m
6,4 mm	13,7 m	725 kg	725 kg	590 kg	450 kg	7,6 – 8,8 m
6,4 mm	18,3 m	590 kg	725 kg	590 kg	450 kg	12 – 13,4 m
6,4 mm	22,9 m	–	–	–	–	16,7 – 18 m
8 mm	6 m	900 kg	725 kg	590 kg	450 kg	0 – 1,2 m
8 mm	8,5 m	770 kg	725 kg	590 kg	450 kg	2,4 – 3,6 m
8 mm	11 m	680 kg	680 kg	590 kg	450 kg	4,8 – 6 m
8 mm	13,7 m	635 kg	635 kg	590 kg	450 kg	7,6 – 8,8 m

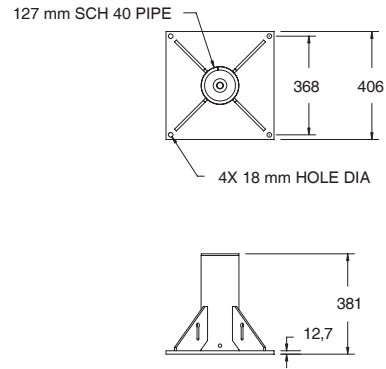
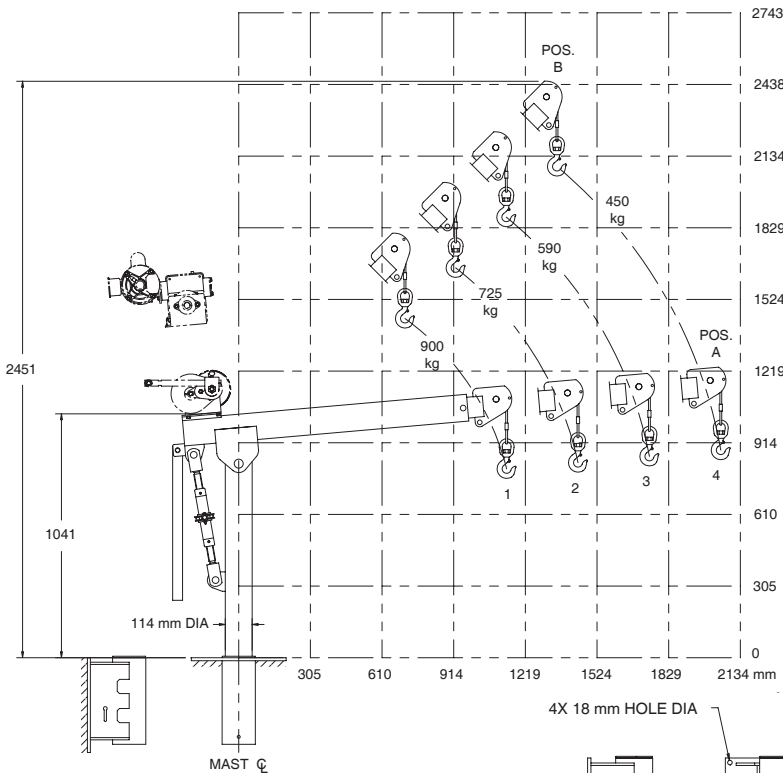
¹ Lift below floor level varies depending on boom position and base configuration. For longer lifts please contact factory.

See Dimensions on Next Page

5124 with pedestal base mounted upright

5124 Upright – Height and Reach

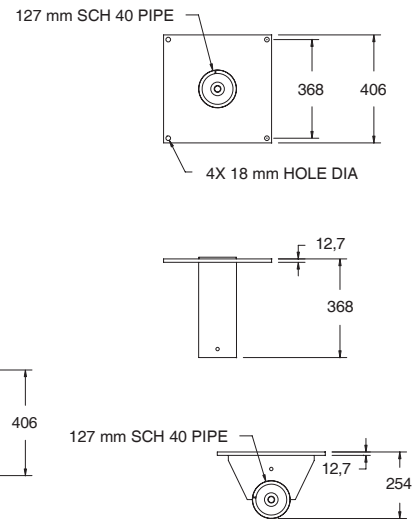
boom position	hook reach	hook height
A-1	1143 mm	1168 mm
A-2	1448 mm	1194 mm
A-3	1753 mm	1219 mm
A-4	2057 mm	1245 mm
B-1	711 mm	1803 mm
B-2	914 mm	2032 mm
B-3	1143 mm	2235 mm
B-4	1346 mm	2464 mm

Dimensions are for reference only and subject to change without notice.


5124 with wall mount base or socket base mounted flush

5124 Flush – Height and Reach

boom position	hook reach	hook height
A-1	1143 mm	813 mm
A-2	1448 mm	838 mm
A-3	1753 mm	864 mm
A-4	2057 mm	889 mm
B-1	711 mm	1448 mm
B-2	914 mm	1676 mm
B-3	1143 mm	1880 mm
B-4	1346 mm	2108 mm

Dimensions are for reference only and subject to change without notice.



See Additional Dimensions on Next Page